

The image features the Swedish flag, which consists of a blue field with a yellow Scandinavian cross. The flag is shown waving on a white flagpole against a clear blue sky. The text is overlaid on the right side of the flag.

Learning portfolio

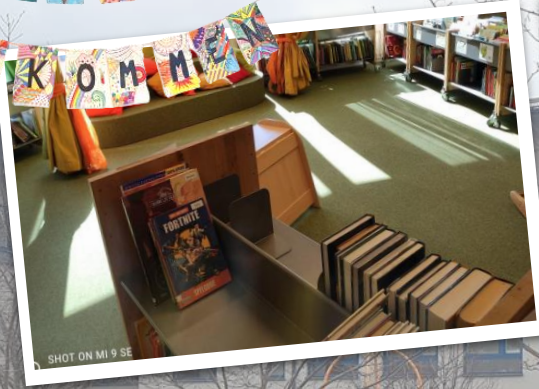
Juan Sebastian Huerta Millas (Spain)
Alexandra Schuffenhauer (Germany)
Antonia La Gioia (Italy)
Francesco De Vincentis (Italy)
Andrea Janssen (Germany)
Eduardo José Ruiz García (Spain)

Education System

Respect for Environment / Healthy food



Inclusion - Sense of community



Autonomy and independence

Our weekly schedule:

| Monday 21/1 | Tuesday 22/1 | Wednesday 23/1 | Thursday 24/1 | Friday 25/1 |
|-------------|--------------|----------------|---------------|-------------|
| 9:00-10:00 | 9:00-10:00 | 9:00-10:00 | 9:00-10:00 | 9:00-10:00 |
| 10:00-11:00 | 10:00-11:00 | 10:00-11:00 | 10:00-11:00 | 10:00-11:00 |
| 11:00-12:00 | 11:00-12:00 | 11:00-12:00 | 11:00-12:00 | 11:00-12:00 |
| 12:00-13:00 | 12:00-13:00 | 12:00-13:00 | 12:00-13:00 | 12:00-13:00 |
| 13:00-14:00 | 13:00-14:00 | 13:00-14:00 | 13:00-14:00 | 13:00-14:00 |
| 14:00-15:00 | 14:00-15:00 | 14:00-15:00 | 14:00-15:00 | 14:00-15:00 |
| 15:00-16:00 | 15:00-16:00 | 15:00-16:00 | 15:00-16:00 | 15:00-16:00 |
| 16:00-17:00 | 16:00-17:00 | 16:00-17:00 | 16:00-17:00 | 16:00-17:00 |
| 17:00-18:00 | 17:00-18:00 | 17:00-18:00 | 17:00-18:00 | 17:00-18:00 |
| 18:00-19:00 | 18:00-19:00 | 18:00-19:00 | 18:00-19:00 | 18:00-19:00 |
| 19:00-20:00 | 19:00-20:00 | 19:00-20:00 | 19:00-20:00 | 19:00-20:00 |
| 20:00-21:00 | 20:00-21:00 | 20:00-21:00 | 20:00-21:00 | 20:00-21:00 |
| 21:00-22:00 | 21:00-22:00 | 21:00-22:00 | 21:00-22:00 | 21:00-22:00 |
| 22:00-23:00 | 22:00-23:00 | 22:00-23:00 | 22:00-23:00 | 22:00-23:00 |
| 23:00-24:00 | 23:00-24:00 | 23:00-24:00 | 23:00-24:00 | 23:00-24:00 |
| 24:00-25:00 | 24:00-25:00 | 24:00-25:00 | 24:00-25:00 | 24:00-25:00 |
| 25:00-26:00 | 25:00-26:00 | 25:00-26:00 | 25:00-26:00 | 25:00-26:00 |
| 26:00-27:00 | 26:00-27:00 | 26:00-27:00 | 26:00-27:00 | 26:00-27:00 |
| 27:00-28:00 | 27:00-28:00 | 27:00-28:00 | 27:00-28:00 | 27:00-28:00 |
| 28:00-29:00 | 28:00-29:00 | 28:00-29:00 | 28:00-29:00 | 28:00-29:00 |
| 29:00-30:00 | 29:00-30:00 | 29:00-30:00 | 29:00-30:00 | 29:00-30:00 |
| 30:00-31:00 | 30:00-31:00 | 30:00-31:00 | 30:00-31:00 | 30:00-31:00 |



Arts (woodwork, needlework) / Music

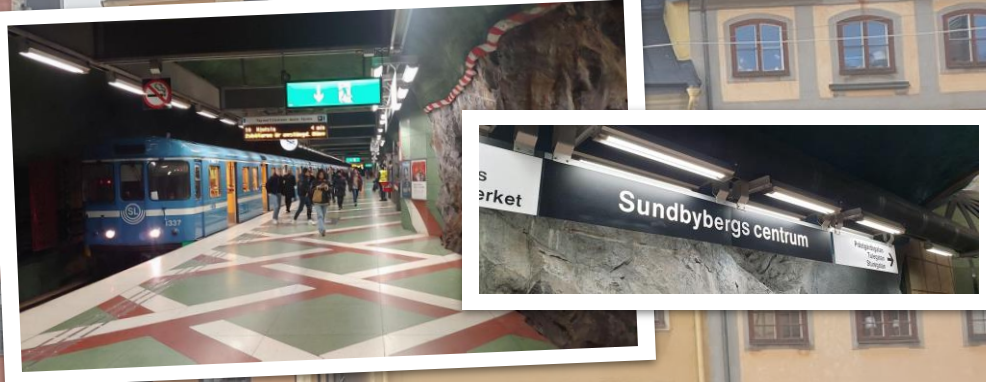


A look into Sweden

Modern Arts and Design



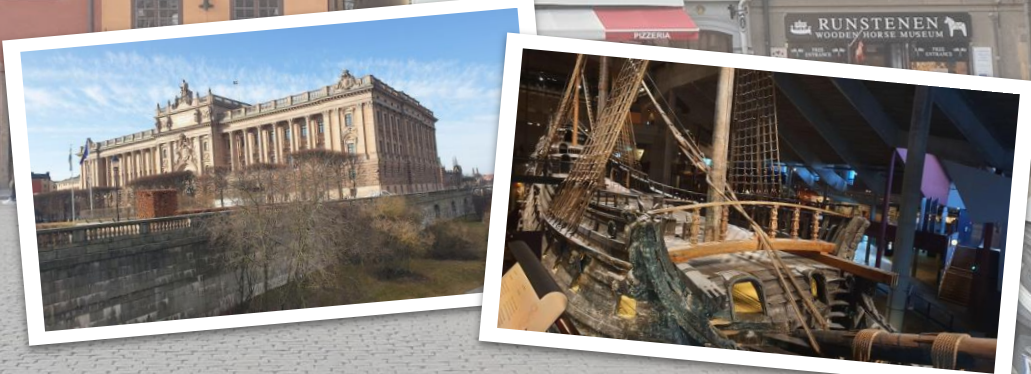
Transport efficiency



Respect for the environment



History, Institutions and tradition



What can we take with us to our schools/systems? What should it be imported?

- Flexible **timetables**
- **Autonomy** of students (self-organised)
- **Relaxing atmosphere** (not stressful)
- **Environmental awareness**
- Use of **technology** 1:1
- **Community** supports students' development
- Everything is **free!**
- 27% + 16% = **42% budget** (Municipality)
- **Appreciation of education** is very high

Dissemination activities

- **Newsletter**
- **Presentations**
- **Debates**
- **Photo albums**
- **Video**
- **New Erasmus projects**
- **Campaigns**
- **Press**